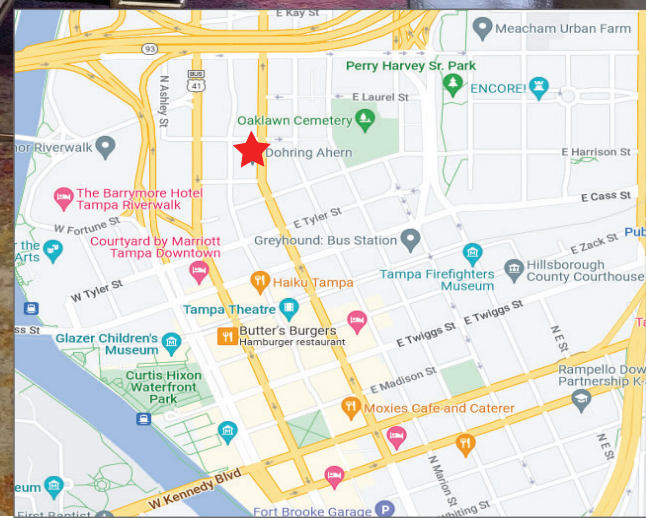


# Offices For Lease - Downtown Tampa



# 1110 N. Florida Avenue

Tampa, Florida 33602

## Offices For Lease - Downtown Tampa

- 2001 construction
- 1st Floor: up to 3,200 sf available
- 2nd Floor: 200 sf, 250 sf, 450 sf & 500 sf available
- 24-hour access
- On-site parking
- Rooftop deck access
- Short-term, one-page lease options
- Shared kitchen, conference & gym with shower
- Excellent access to I-275, I-4 and Crosstown
- Centrally located: walk to courthouses, restaurants, The Riverwalk & Armature Works at The Heights

### Services Included:

- Utilities, Janitorial, Pest Control

### Add-Ons Available:

- Signage/naming rights available
- Parking (reserved/unreserved)
- Internet
- Tech support
- Furniture
- Virtual suites with mail collection



Abbey Ahern  
Principal, Brokerage  
813.416.7155  
Abbey@DohringAhern.com



# 1110 N. Florida Avenue

Tampa, Florida 33602



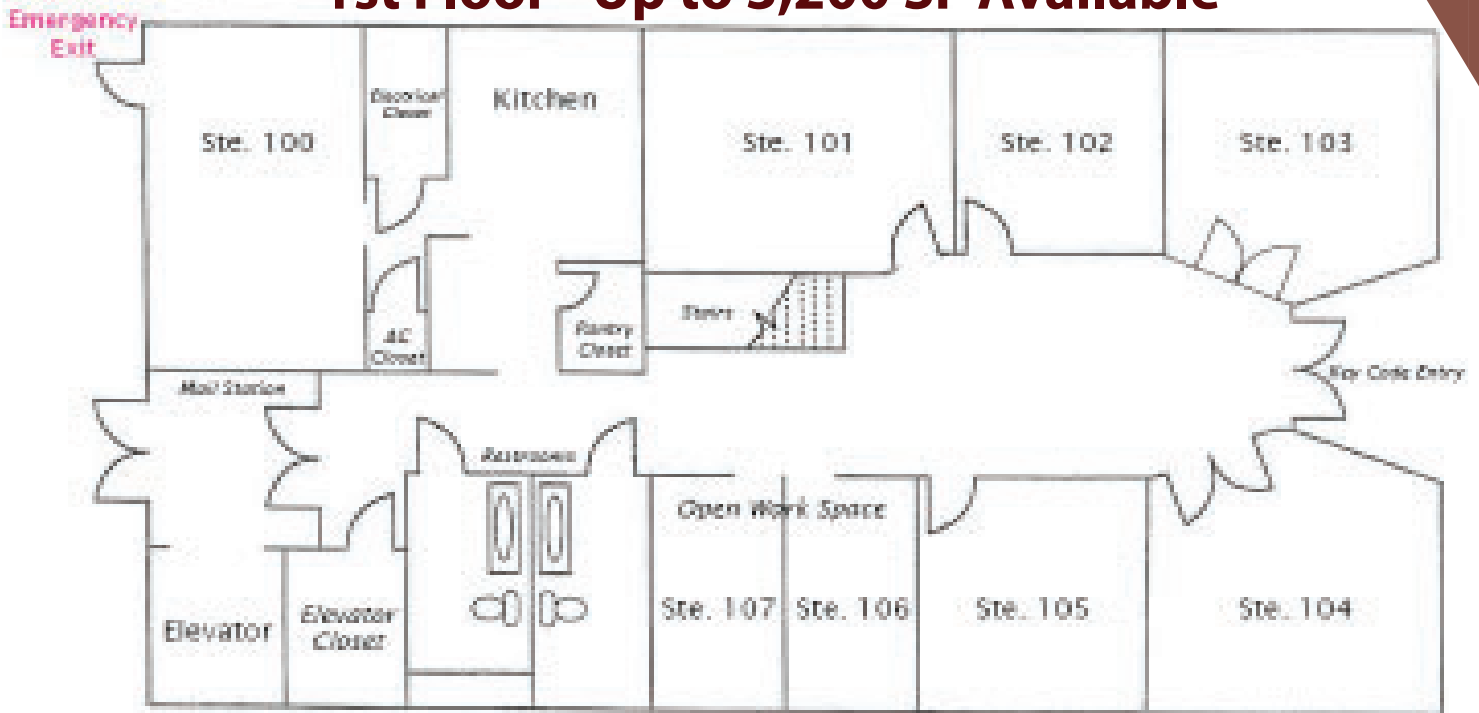
Abbey Ahern  
Principal, Brokerage  
813.416.7155  
Abbey@DohringAhern.com



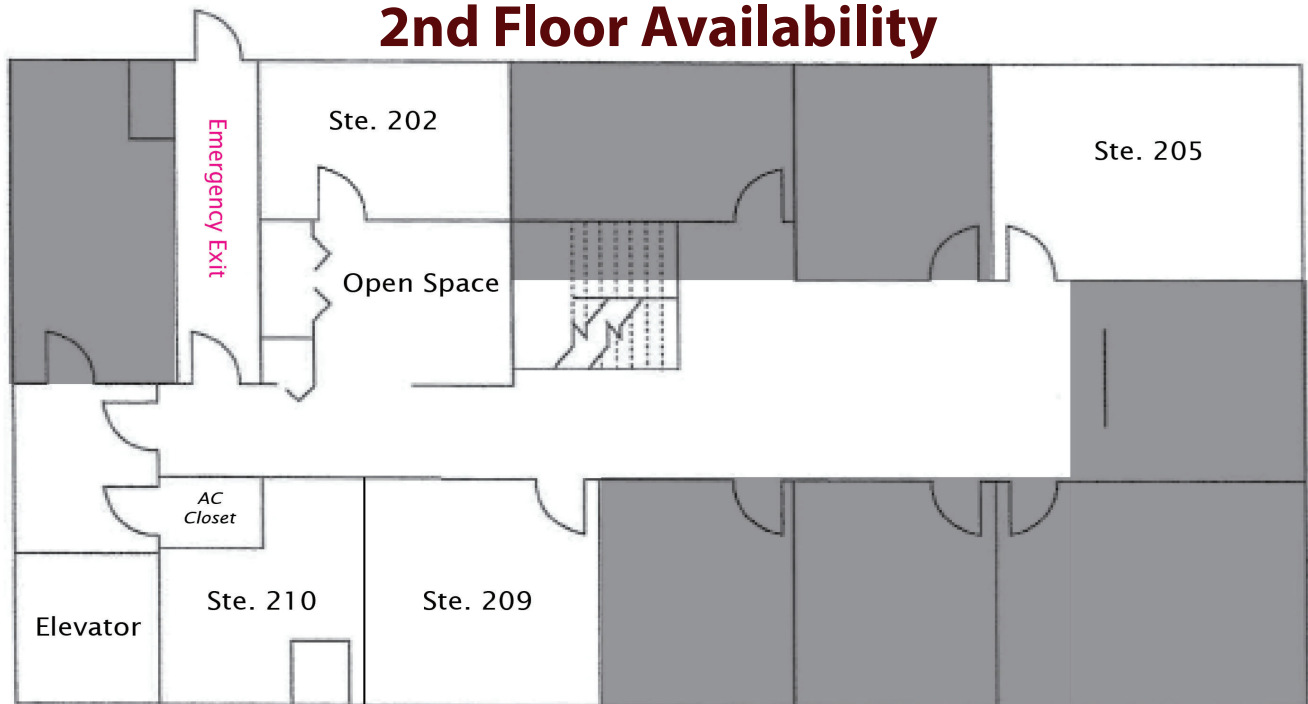
# 1110 N. Florida Avenue

Tampa, Florida 33602

## 1st Floor - Up to 3,200 SF Available



## 2nd Floor Availability



Abbey Ahern  
Principal, Brokerage  
813.416.7155  
Abbey@DohringAhern.com