

# OFFICE BUILDING FOR SALE



8626 N. Himes Ave., Tampa, FL 33614

- 5,028 SF
- 2006 block construction
- Fully renovated in 2024, consisting of:
  - Replacement of fixtures, restrooms, water fountains and kitchen
  - Replacement of wall finishes, doors, and hardware
  - LED lighting and LVP flooring throughout
  - Composite decking and exterior refurbishment (List available)
- Elaborate entry way and finishes throughout
- Multiple C-Suites
- Two State-of-the-art conference facilities
- Private huddle rooms
- 12 private offices
- Customizable layout allows for 30 agents
- Fully integrated building generator
- Maximum functionality server room
- Fully furnished option
- Alarm, surveillance and key-less entry system
- HVAC replacement in 2022
- Shared use of 39 parking spaces

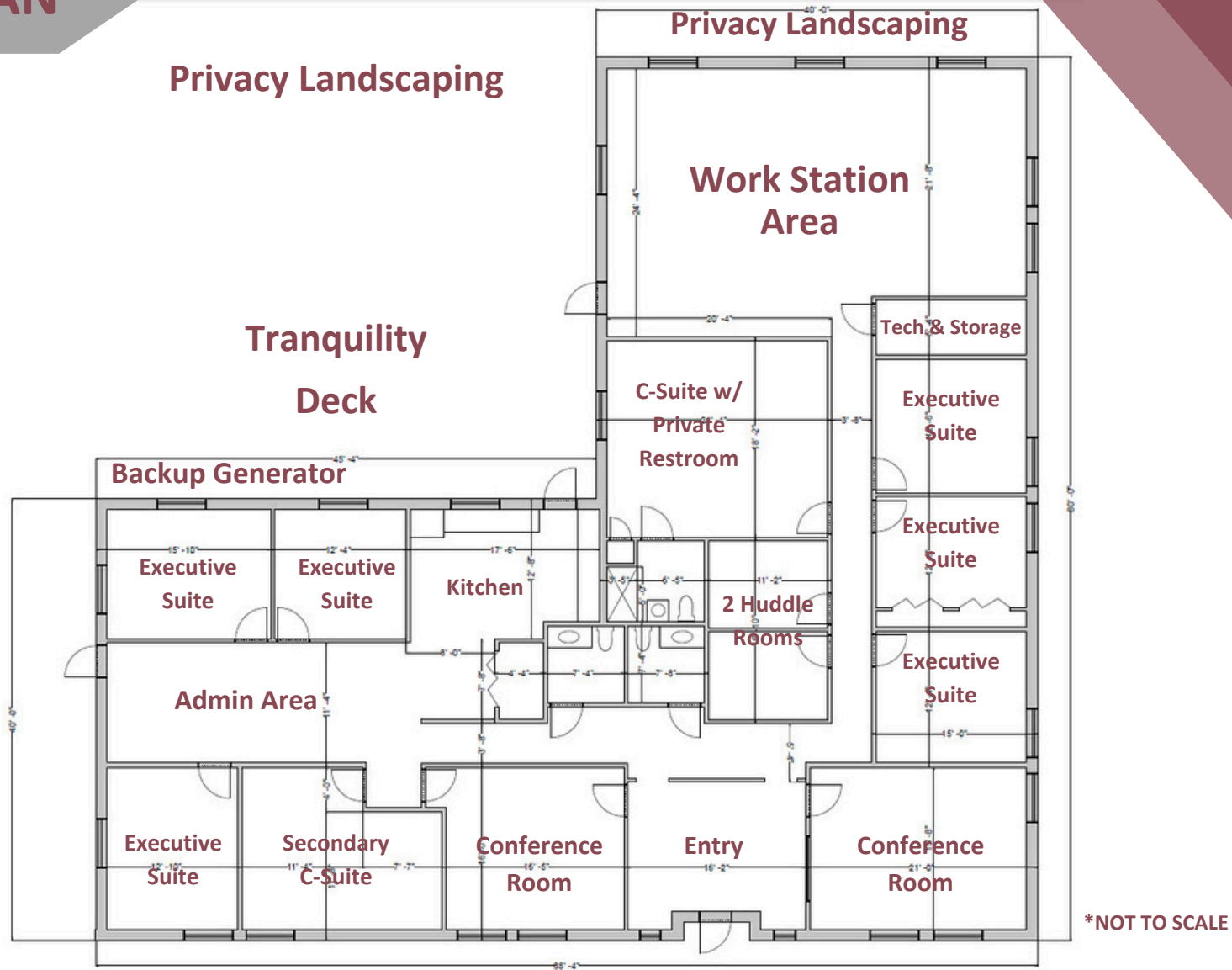
## Abbey Ahern

Principal, Brokerage

813.416.7155

Abbey@DohringAhern.com

# FLOOR PLAN



Shared use of 39 spaces with great visibility and signage.

## 8626 N. Himes Ave., Tampa, FL 33614

**Abbey Ahern**

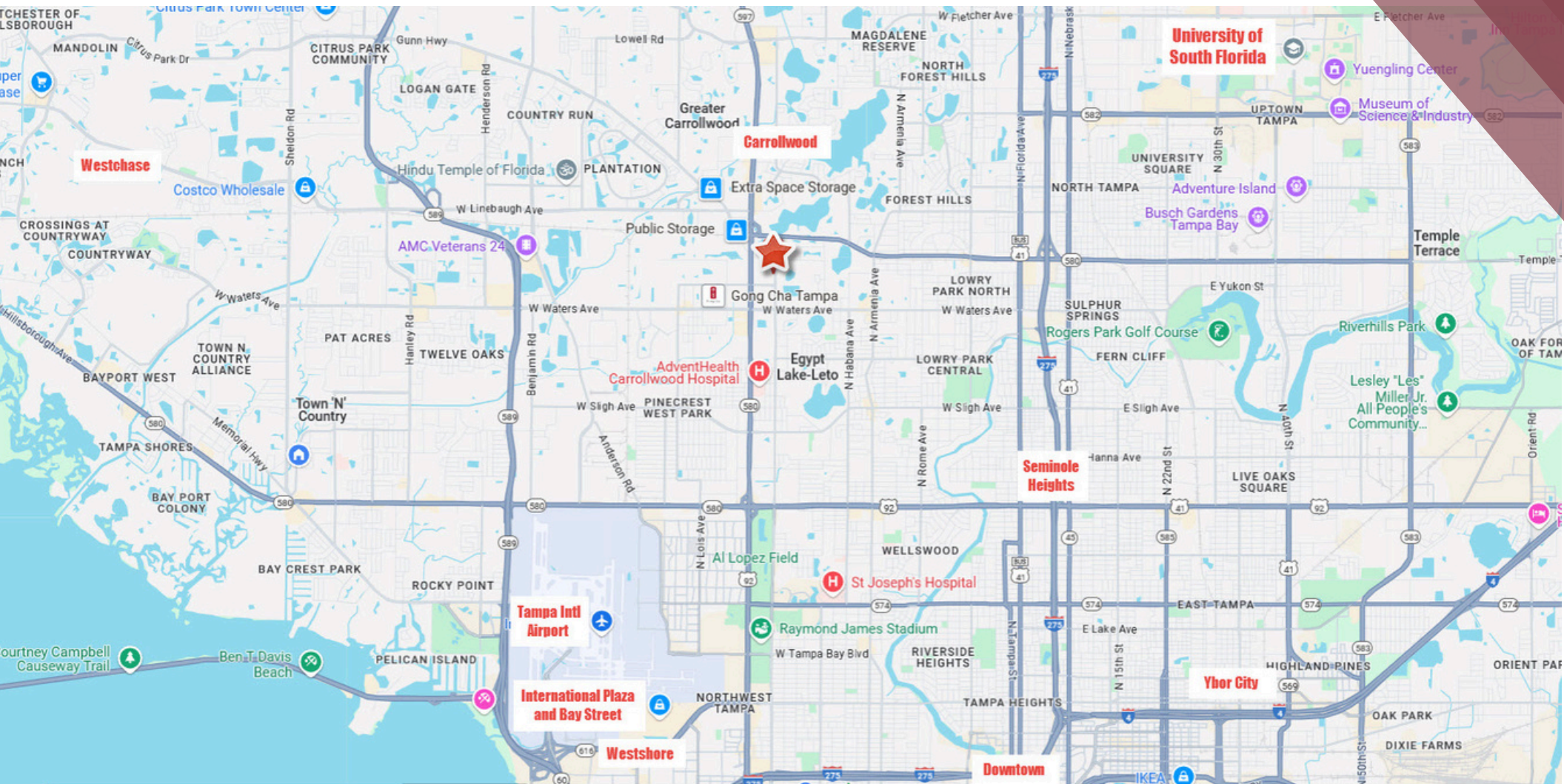
Principal, Brokerage

813.416.7155

Abbey@DohringAhern.com



# MAP



8626 N. Himes Ave., Tampa, FL 33614

**Abbey Ahern**

Principal, Brokerage

813.416.7155

Abbey@DohringAhern.com



# 8626 N. Himes Ave., Tampa, FL 33614



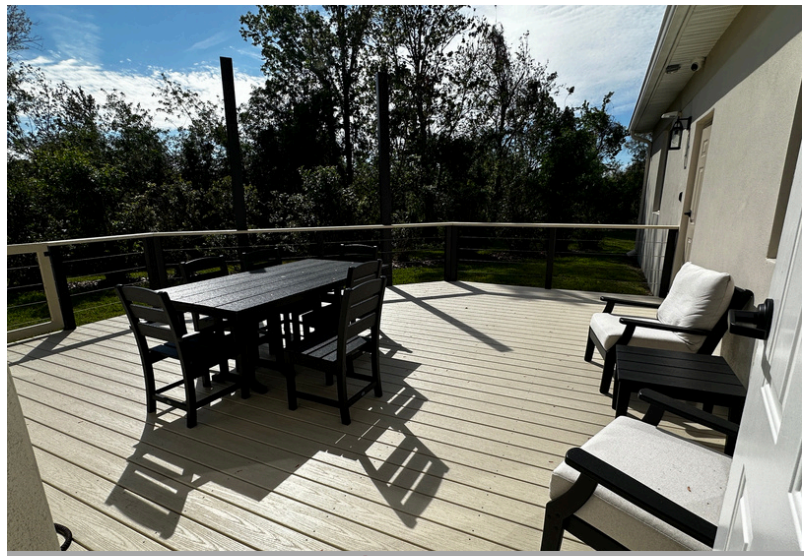
[Virtual Tour Here](#)



[Virtual Tour Here](#)



[Virtual Tour Here](#)



[Virtual Tour Here](#)

**Abbey Ahern**  
Principal, Brokerage  
813.416.7155  
Abbey@DohringAhern.com



# 8626 N. Himes Ave., Tampa, FL 33614



[Virtual Tour Here](#)



[Virtual Tour Here](#)



[Virtual Tour Here](#)



[Virtual Tour Here](#)

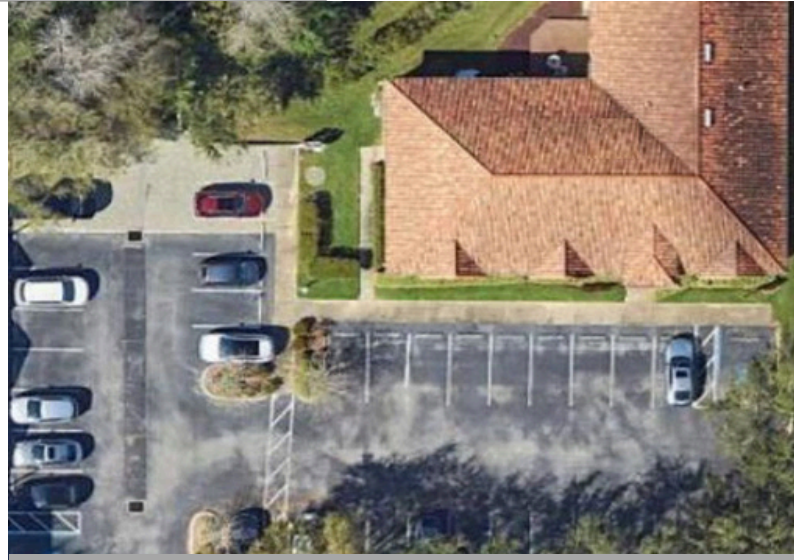
**Abbey Ahern**  
Principal, Brokerage  
813.416.7155  
Abbey@DohringAhern.com



# 8626 N. Himes Ave., Tampa, FL 33614



[Virtual Tour Here](#)



[Virtual Tour Here](#)



[Virtual Tour Here](#)



[Virtual Tour Here](#)

**Abbey Ahern**

Principal, Brokerage

813.416.7155

[Abbey@DohringAhern.com](mailto:Abbey@DohringAhern.com)