

# OFFICE SPACE FOR LEASE



4017 W. Martin Luther King Jr. Blvd., Tampa, FL 33614



4017 W. Martin Luther King Jr. Blvd., Tampa, FL 33614



- Ste. 203 - 2,080 SF
- \$26.00 PSF Modified Gross
- 3.91/1,000 parking ratio (84 spaces)
- Fully gated secure facility with fiber
- Located in a non-evacuation zone with generator
- Located in a HubZone & Industrial General Zoned
- Great amenities including breakroom and terrace
- Conveniently located in the Westshore submarket with easy access to I-275, and Veterans Expressway
- Close proximity to Rays Stadium, Buccaneers Stadium, Tampa Int'l Airport, International Plaza & St. Joseph's Hospital



**Abbey Ahern**

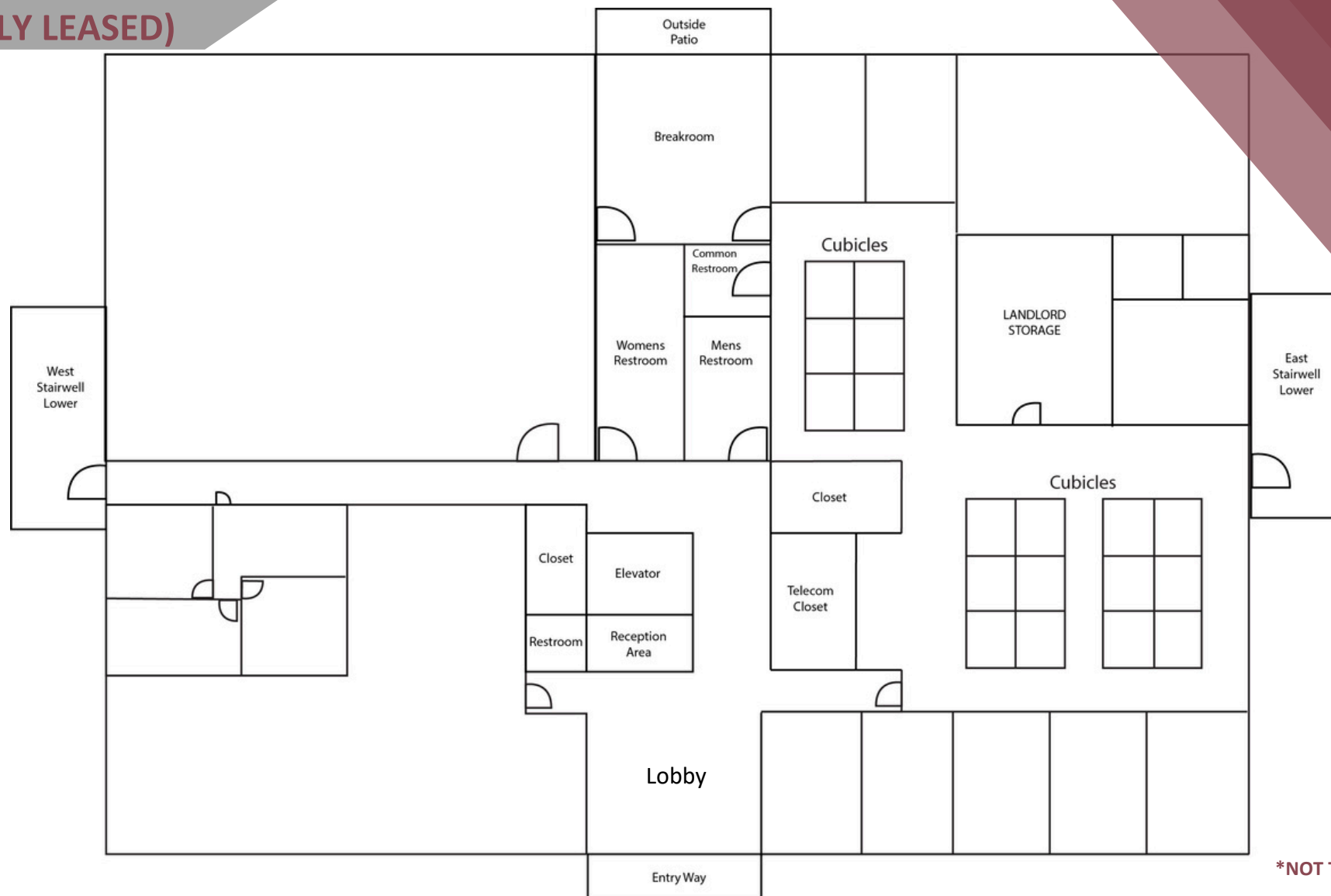
Principal, Brokerage

813.416.7155

Abbey@DohringAhern.com



# 1st Floor (FULLY LEASED)



4017 W. Martin Luther King Jr. Blvd., Tampa, FL 33614

**Abbey Ahern**

Principal, Brokerage

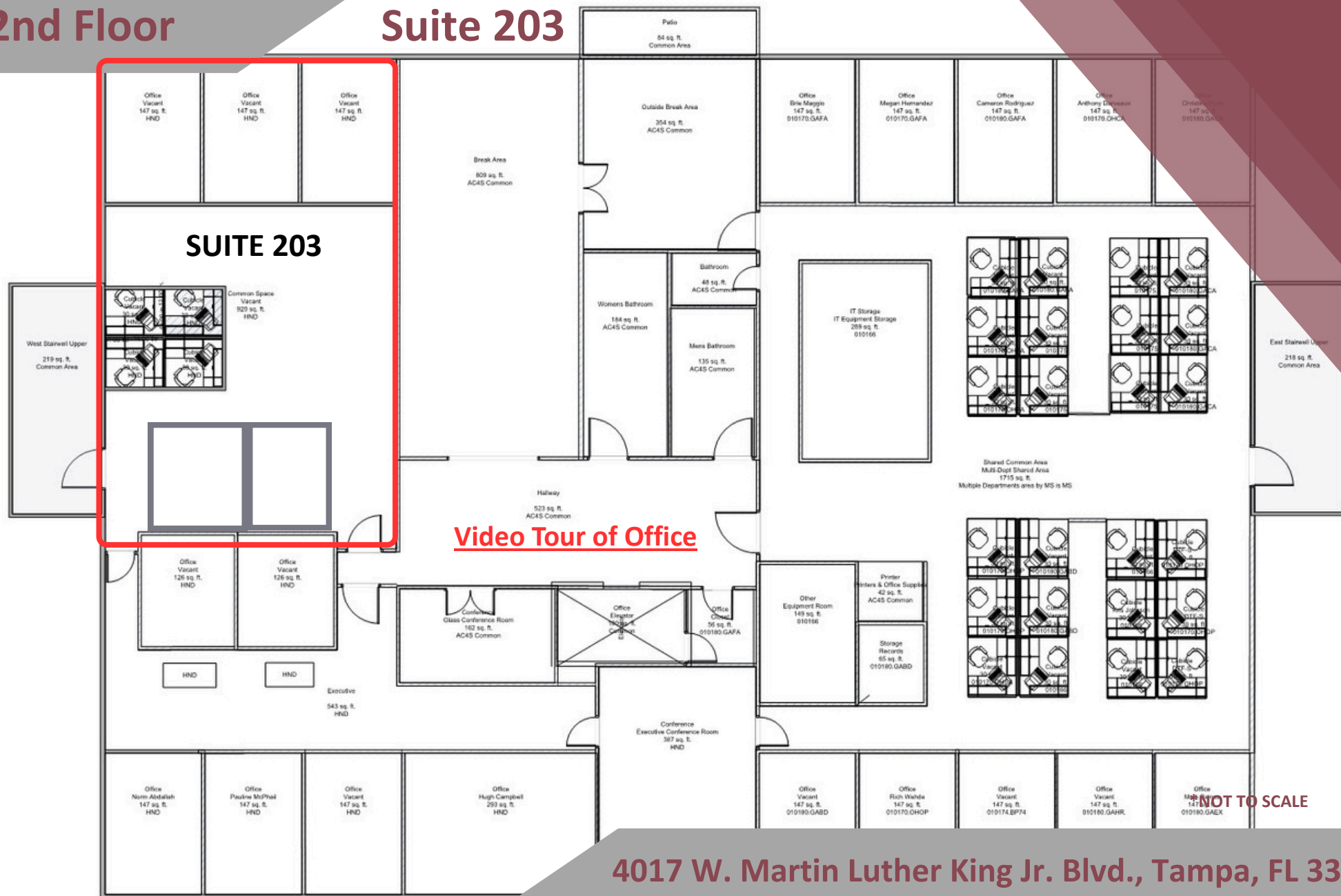
813.416.7155

Abbey@DohringAhern.com



# 2nd Floor

## Suite 203



4017 W. Martin Luther King Jr. Blvd., Tampa, FL 33614

**Abbey Ahern**

Principal, Brokerage

813.416.7155

Abbey@DohringAhern.com





4017 W. Martin Luther King Jr. Blvd., Tampa, FL 33614  
Breakroom / Kitchen & Suite 203



**Abbey Ahern**

Principal, Brokerage

813.416.7155

[Abbey@DohringAhern.com](mailto:Abbey@DohringAhern.com)





**4017 W. Martin Luther King Jr. Blvd., Tampa, FL 33614**  
**Lobby, Parking, 2<sup>nd</sup> floor terrace, and Security Gate**



**Abbey Ahern**

Principal, Brokerage

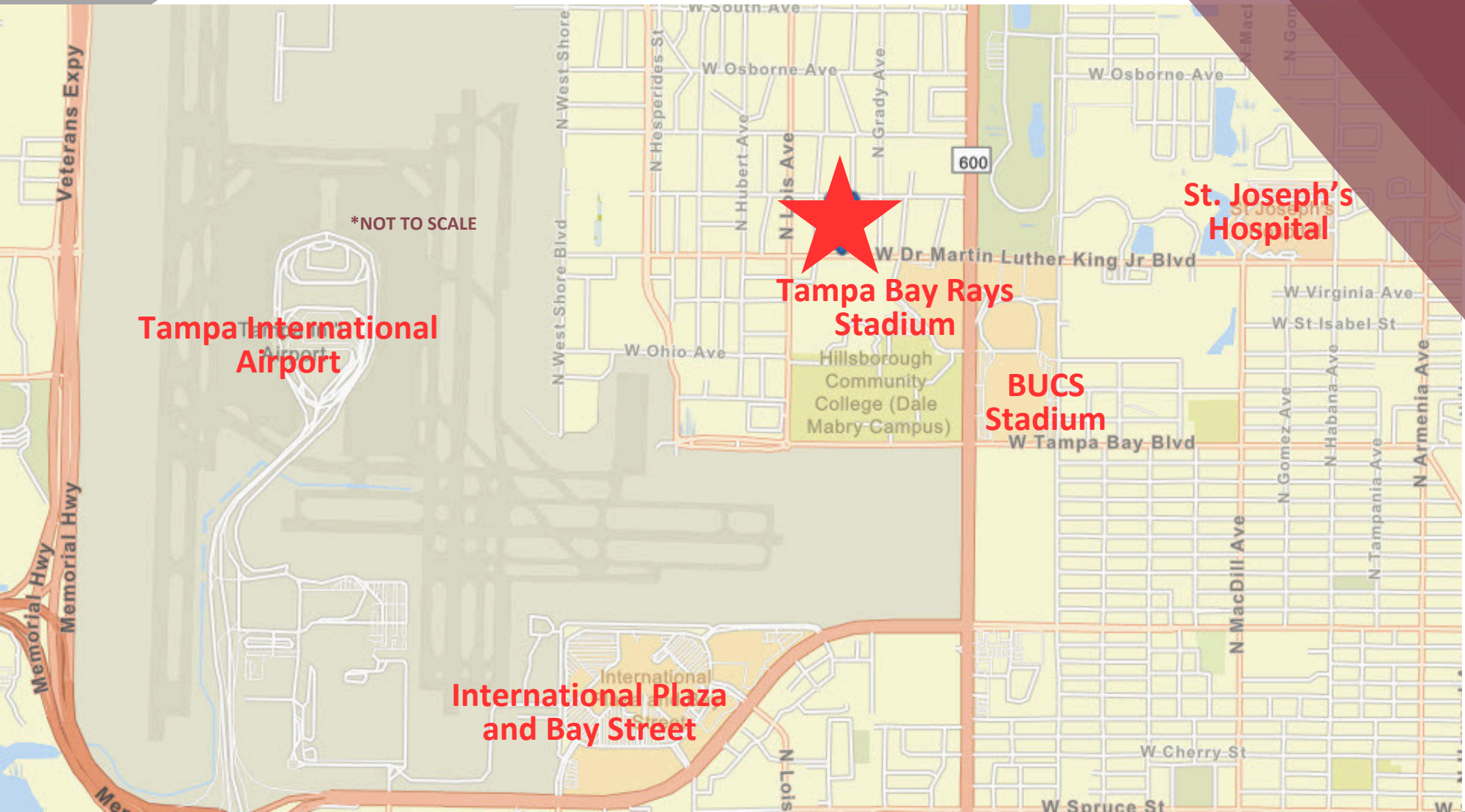
813.416.7155

[Abbey@DohringAhern.com](mailto:Abbey@DohringAhern.com)





# MAP



4017 W. Martin Luther King Jr. Blvd., Tampa, FL 33614

**Abbey Ahern**

Principal, Brokerage

813.416.7155

Abbey@DohringAhern.com

